

explorerLAB™

MOBILE SCIENCE LABORATORY



Teach science in any classroom

Ultra-safe SmartLine™ netbook charging

Extending chemical resistant work surface

Comprehensive glassware and equipment storage

Adjustable twin AV mount

Complete with science glassware and equipment

Integrated tap, sink and water supply

0800 130 3456

LapSafe®
PRODUCTS

make the **educated** choice



Introduction

LapSafe® Products is proud to introduce the ExplorerLAB™ mobile science laboratory, revolutionising science lessons by delivering hands-on, experimental learning to any classroom. With the ExplorerLAB™, the fundamentals of a complete science laboratory are provided neatly stored in a compact and fully mobile cabinet.

The ExplorerLAB™ is ideal for use as a teacher station in an existing laboratory, and has the capability to deliver multimedia presentations and safe scientific demonstrations. Because of its mobility, the ExplorerLAB™ can be used as a flexible learning resource taking science to any classroom. We are confident that the ExplorerLAB's combination of safety, quality and functionality will provide the solution to any school's requirements.

Thank you for taking the time to read our brochure.

Construction

The ExplorerLAB™ has a steel construction, measures 1450mm long x 610mm wide x 920mm high overall, and weighs approximately 167kg empty.

The ExplorerLAB™ provides extensive storage space for valuable scientific equipment and with its strong, lockable doors provides a high level of security.

The ExplorerLAB™ has four 125mm diameter swivelled wheels, two of which have foot operated locks to maintain the unit in the chosen working location. The unit has a sturdy, full width handle making it easily manoeuvrable between classrooms and on different floor surfaces.

Chemical resistant extendable work area

The working area of the ExplorerLAB™ is an ideal ergonomic height for both teacher and student to use and view activities, and because of its extremely durable chemical resistant surface, it is ideal for demonstrating any type of scientific investigation. The working area can be extended to approximately 1m² by lifting the collapsible top, which securely locks into position.

An integral sink and tap with electronic pump is provided for convenient access to water, and disposal of waste liquid. The ExplorerLAB™ carries 5 litres of clean water and has the capacity to store up to 5 litres of waste liquid. Both containers are easily accessible via a dedicated lockable door.

State	Length	Width	Surface Area
Standard Work Surface	1.323m	0.610m	0.81m ²
Extended Work Surface	1.713m	0.610m	1.05m ²

Presentation

The ExplorerLAB™ provides the ideal platform for multimedia presentations with its built-in adjustable platforms to support both a laptop and a projector, fitted power sockets and effective cable management.

Safe charging for netbooks

The ExplorerLAB™ incorporates storage and charging for up to five netbooks using the unique 'LapSafe® SmartLine™' charging technology, which ensures both user safety and optimal charging for the netbooks. The ExplorerLAB™ can be configured to suit most makes of netbook, and 'LapSafe® SmartLine™' charges all netbooks simultaneously in the fastest possible time, without the need for AC adaptors.



Storage

The ExplorerLAB™ includes comprehensive storage for a wide variety of equipment:

A glassware storage area with 4 drawers measuring 300mm x 300mm x 150mm. Each drawer has a foam insert that is cut to support and protect the particular items stored.

Specific in-door storage for the 18 x 150ml test tubes and holders for 5 each of 10ml and 25ml pipettes. A row of hooks is attached to the lower inside of the doors for leads etc.

An accessory drawer beneath the unit measuring 600mm x 450mm x 100mm is for safe storage of safety goggles, latex gloves and power leads etc.

The interchangeable storage area carries up to 8 x 75mm deep trays plus 1 x 150mm deep tray. This area carries the sensors for the data loggers in a number of the trays and is specifically designed so that investigative equipment for biology (green trays), physics (red trays) or chemistry (blue trays) can be loaded into the unit before lessons, making the unit truly flexible.



Glassware and accessories

The ExplorerLAB™ comes complete with a wide variety of scientific glassware and accessories listed below:

5	50ml Beakers	5	10ml Pipettes
5	100ml Beakers	5	25ml Pipettes
5	250ml Beakers	1	10ml Pipette Pump
5	100ml Stopper Bottles	1	25ml Pipette Pump
5	250ml Stopper Bottles	1	Goggles
5	100ml Conical Flasks	1	Ear Defenders
4	100ml Measuring Cylinders	1	Box of Latex Gloves
4	150ml Measuring Cylinders	1	Velcro Cable Tidy
18	150ml Test Tubes		

The ExplorerLAB™ comes as standard with the above scientific glassware and equipment but can be ordered unpopulated.



Data loggers

The ExplorerLAB™ has dedicated storage to fit any make and model of data logger.

Whilst data loggers are not provided as standard with the ExplorerLAB™, we recommend:

Data logger:

EasySense VISION1x (2020A) EasySense VISION USB (Inc. 2x Stylus)

Sensors: (1 of each)

Current: *Differential Input ±10A (Resolution 10mA).*

Heart Rate & Pulse Waveform: *2 ranges 0-200 Beats per minute ±2000mV Waveform.*

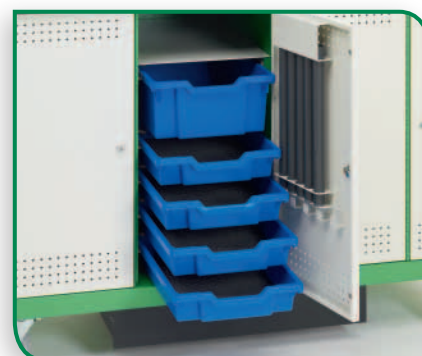
Light Level: *Multi range.*

Magnetic Field: *2 ranges.*

pH Adaptor: *(3125) and pH Electrode (2251) Pack*

Temperature Sensor: *-30°C to +110°C (Resolution 0.1°C) -22°F to 230°F (Resolution 0.1°F). Housed in stainless steel tube that is resistant to dilute acids.*

EasySense Software: *PC Multi-user licence Arabic/English Requires Windows XP or Later.*





Safety and quality

At LapSafe® Products we pride ourselves in providing the highest quality products with safety as standard. LapSafe® Products is fully BS EN 9001: 2008 Certified (Quality Management), and the ExplorerLAB™ is manufactured accordingly.

The ExplorerLAB™ has been fully CE Certified for electromagnetic compatibility and low voltage directive testing and compliance, and conforms to all required British Safety Standards. Particular attention has been given to the sophisticated circuitry required for electronic management and control of the in-built netbook charging system.

For further information on the ExplorerLAB™ contact us FREE on [0800 130 3456](tel:08001303456).



make the **educated** choice

LapSafe® Products
A Division of FRAB Ltd

3 Wakes Hall Business Centre, Wakes Colne,
Colchester, CO6 2DY, United Kingdom

T: +44 (0)1787 226166 F: +44 (0)1787 226167
E: sales@lapsafe.com